

**ALASKA DIVISION OF HOMELAND
SECURITY & EMERGENCY MANAGEMENT**
SITUATION REPORT
25-148 May 28, 2025



Toll-Free 1.800.478.2337

Anchorage Area 907.428.7000

SEOC 907.428.7100

<u>SEOC Preparedness Level</u> Level 1 – Routine Operations	http://ready.alaska.gov	<u>Alaska Military Installation Force Protection Level:</u> FPCON Bravo
<u>NTAS Bulletin</u> U.S. Department of Homeland Security issued updated National Terrorism Advisory Bulletin on May 24, 2023. https://www.dhs.gov/national-terrorism- advisory-system	<u>Maritime Security (MARSEC)</u> Level:1- Minimum Appropriate Security Measures	

(Significant changes from previous situation reports are red.)

Significant Issues:

SEOC received initial reports of a small landslide in Ketchikan this morning. Operations staff have been in contact with the Ketchikan Fire Chief and the Borough Emergency Manager. The slide occurred 5 miles north of town; one home was involved, and no injuries. They are assessing the damage and there are no requests for support from the SEOC at this time.

Department of Health (DOH):

For resources and current information, see: <https://health.alaska.gov/en/>

Travel Alerts and Conditions:

For current driving conditions, dial 511 or visit: <https://511.alaska.gov/>

- **Ketchikan North Tongass Hwy at Wolfe Point-** Expect delays due to ongoing slope repair including blasting efforts.
- **Dalton Highway-** will be closed at MP 59 on May 29th 7:00 AM - 4:00 PM for a culvert replacement.
- **Glenn Hwy Knik River Bridge Delays-**The northbound Knik River Bridge is closed until late May, with all traffic shifted onto the southbound bridge; expect congestion, speed reductions, and follow all posted detours

Barry Arm Landslide / Tsunami Risk:

For the latest information on the Barry Arm Landslide and Tsunami risk, click here:
<https://dggs.alaska.gov/hazards/barry-arm-landslide.html>

Earthquakes:

United States Geological Service (USGS) Earthquake Information:

<https://www.usgs.gov/programs/earthquake-hazards>

National Tsunami Warning Center: <https://tsunami.gov/>

Alaska Volcanoes:

Great Sitkin Alert Level: **Watch** and Aviation Color Code: **Orange**

Mt. Spurr Alert Level: **Advisory** and Aviation Color Code: **Yellow**

For Alaska Volcano updates, go to: <https://www.avo.alaska.edu/>

Air Quality Index (AQI) Advisories:

Southcentral Alaska has exceptionally high amounts of tree pollen in the air right now, triggering allergies for sensitive Alaskans. Anchorage pollen count stations show high pollen counts from birch, poplar, cottonwood, aspen, willow and alder trees. Highest in nine years, may want to limit their time outside while counts are so high, especially if they know their allergies worsen other medical conditions.

For the most up-to-date Air Quality Index Advisories:

<https://dec.alaska.gov/Applications/Air/airtoolsweb/Advisories>

Spills of Oil and Hazardous Substances:

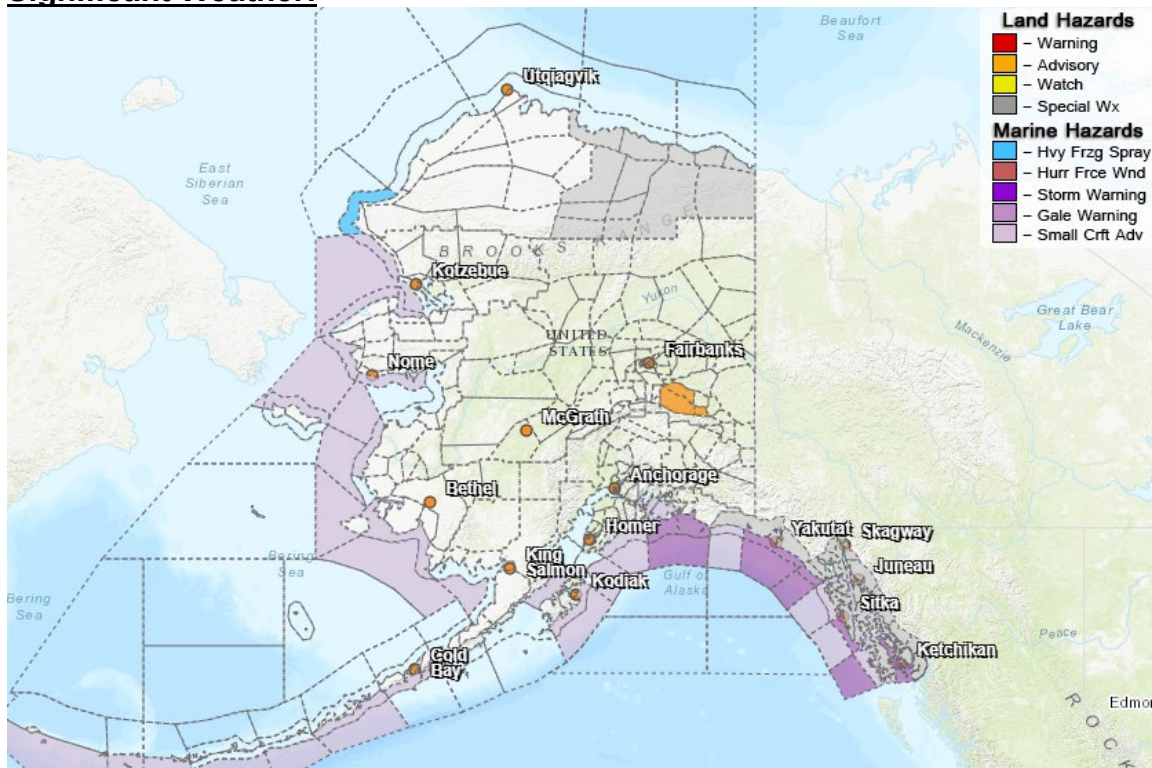
The Alaska Division of Environmental Conservation (ADEC) Spill Prevention and Response page is located at: <https://dec.alaska.gov/spar/>

Alaska Cyber Security Information:

State Employees may sign up for cybersecurity notifications and alerts at:

<https://oit.alaska.gov/security>

Significant Weather:



Special Weather Statement: Snowfall now through Thursday

*Central Beaufort Sea Coast; Eastern Beaufort Sea Coast; Central Arctic Plains; Central Brooks Range; Romanzof Mountains.

Special Weather Statement: Heavy rain all day

*City and Borough of Yakutat; Municipality of Skagway; Haines Borough and Klukwan; Glacier Bay; Eastern Chichagof Island; Cape Fairweather to Lisianski Strait; City and Borough of Sitka; Admiralty Island; City and Borough of Juneau; Petersburg Borough; Western Kupreanof and Kuiu Island; Prince of Wales Island; City and Borough of Wrangell; Ketchikan Gateway Borough; City of Hyder; Annette Island

Wind Advisory: In effect from 2am Thursday till 2am Friday

*Delta Junction and Eastern Alaska Range North of Trims Camp

Flood Advisory: In effect till 3pm Thursday

*Ketchikan Gateway Borough

For more information, go to <https://weather.gov/arh/>

Alaska Wildland 2025 Fire Season:

The Alaska Interagency Coordination Center is at Preparedness Level: 1

Total Fires YTD: 84

Total Acres: 639.4 There are currently 10 active fire(s) with 1 new and 1 fires staffed.

For more information, go to <https://fire.ak.blm.gov/> or <https://akfireinfo.com/>

The Next Situation Report will be on **May 29, 2025**. A significant situation or threat level change will prompt an interim report. This report is posted on the internet at <https://ready.alaska.gov/sitrep>.

To register for email distribution, PLEASE go to:

<http://list.state.ak.us/mailman/listinfo/dhsem.situation.report>.

Direct questions regarding this report to the SEOC at 907-428-7100 or seoc@alaska.gov.